

CHARGER  
CHARGER  
CHARGER  
CHARGER

# CHARGER 73

charger special edition 2-door hardtop  
charger 2-door hardtop  
charger 2-door coupe

## Table of Contents

Split-back Bench Seat with folding center armrest	
Vinyl—Standard Charger S.E. ....	26, 27
Cloth & Vinyl—Optional Charger S.E. ....	26, 27
Bucket Seats	
Vinyl w/C.A.R.—Optional Charger S.E. ....	28, 29
Cloth & Vinyl w/C.A.R.—Optional Charger S.E. ....	28, 29
Vinyl—Optional Charger HT ....	32, 33
Cloth & Vinyl—Optional Charger HT ....	32, 33
Bench Seats	
Vinyl—Standard Charger HT and Coupe ....	30, 31
Cloth & Vinyl—No cost option—Charger HT ....	30, 31



# CHARGER SPECIAL EDITION

## ■ 2-DOOR HARDTOP



- Charger Special Edition 2-door Hardtop standard all-vinyl bench seat with folding center armrest. H4 codes

## ■ 2-DOOR HARDTOP



- Charger Special Edition 2-door Hardtop optional at extra cost. Cloth and vinyl split-back bench seat with folding center armrest. Includes Brougham door trim panel, V3 codes





**CODE H4B5**

Exteriors: JA5, HB1, GB5, EW1, TX9 (TB3, HL4)



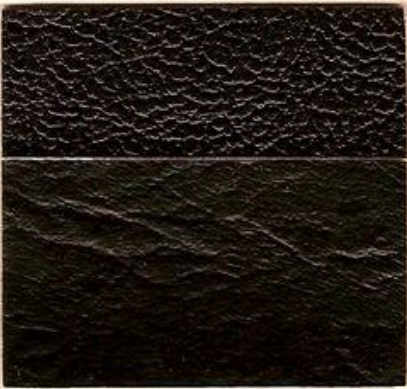
**CODE H4F6**

Exteriors: JF1, GF3, JF8, HL4, EW1, TX9 (HT6)



**CODE H4Y4**

Exteriors: HL4, EW1, TX9, JY3, JY6, JY9 (JF8, GK6)



**CODE H4X9**

Exteriors: All Charger colors



**CODE H4L3**

Exteriors: GB5, FE5, GF3, JF8, GK6, HL4, TX9, JY3, JY6, JY9 (JA5, HB1, TB3, JF1, EW1, FY1)



**CODE V3B5**

Exteriors: JA5, HB1, GB5, EW1, TX9 (TB3, HL4)



**CODE V3F6**

Exteriors: JF1, GF3, JF8, HL4, EW1, TX9 (HT6)



**CODE V3Y4**

Exteriors: HL4, EW1, TX9, JY3, JY6, JY9 (JF8, GK6)



**CODE V3X9**

Exteriors: All Charger colors

Exterior paint codes shown are recommended for color coordination. Exterior paint codes shown in ( ) are also available.





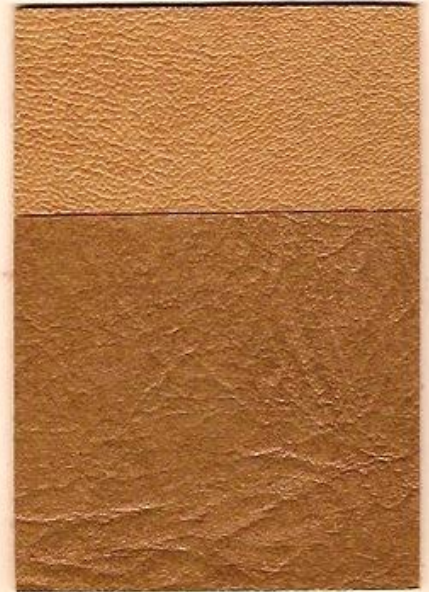
**CODE E6B5**

Exteriors: JA5, HB1, GB5, EW1, TX9  
(TB3, HL4)



**CODE E6F6**

Exteriors: JF1, GF3, JF8, HL4, EW1,  
TX9 (HT6)



**CODE E6Y4**

Exteriors: HL4, EW1, TX9, JY3, JY6,  
JY9 (JF8, GK6.)



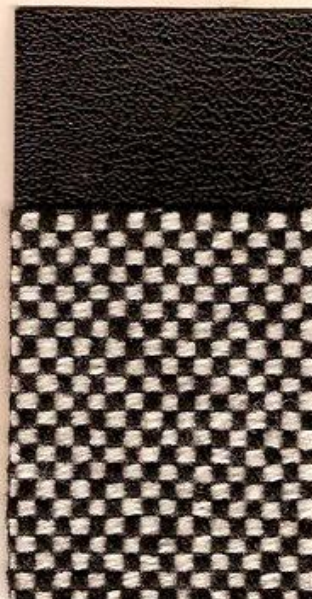
**CODE E6X9**

Exteriors: All Charger colors



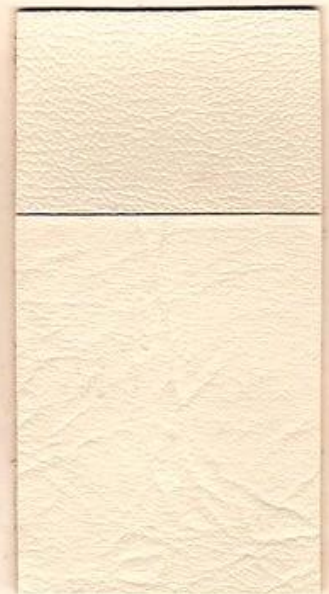
**CODE E6L3**

Exteriors: GB5, FE5, GF3,  
JF8, GK6, HL4,  
TX9, JY3, JY6,  
JY9 (JA5, HB1,  
TB3, JF1, EW1,  
FY1)



**CODE E5X9**

Exteriors: All Charger colors



**CODE E6XW**

Exteriors: All Charger Colors

Exterior paint codes shown are recommended for color coordination.  
Exterior paint codes shown in ( ) are also available.



# CHARGER SPECIAL EDITION

## ■ 2-DOOR HARDTOP



- Charger Special Edition 2-door Hardtop optional at extra cost all-vinyl or cloth and vinyl bucket seats includes Brougham Door Trim Panel. Code E6 or Code E5. Folding center armrest is standard. Console available as a no-cost option





# CHARGER

## ■ 2-DOOR HARDTOP



- Charger 2-door Hardtop standard all-vinyl bench seat. C2 codes



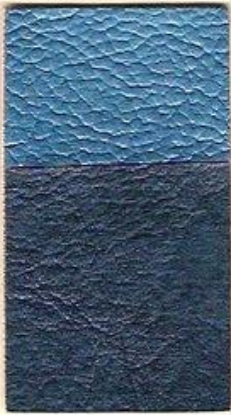
- Charger 2-door Hardtop cloth and vinyl bench seat. S1 codes available no-cost option

## ■ 2-DOOR COUPE



- Charger 2-door Coupe standard all-vinyl bench seat. B2 codes





**CODE C2B5**

Exteriors: JA5, HB1, GB5, EW1, TX9, (TB3, HL4)



**CODE C2F6**

Exteriors: JF1, GF3, JF8, HL4, EW1, TX9 (HT6)



**CODE C2Y4**

Exteriors: HL4, EW1, TX9, JY3, JY6, JY9, (JF8, GK6)



**CODE C2X9**

Exteriors: All Charger colors



**CODE C2L3**

Exteriors: GB5, FE5, GF3, JF8, GK6, HL4, TX9, JY3, JY6, JY9 (JA5, HB1, TB3, JF1, EW1, FY1)



**CODE S1B5**

Exteriors: JA5, HB1, GB5, EW1, TX9 (TB3, HL4)



**CODE S1F6**

Exteriors: JF1, GF3, JF8, HL4, EW1, TX9 (HT6)



**CODE S1X9**

Exteriors: All Charger Colors



**CODE S1Y4**

Exteriors: HL4, EW1, TX9, JY3, JY6, JY9 (JF8, GK6)



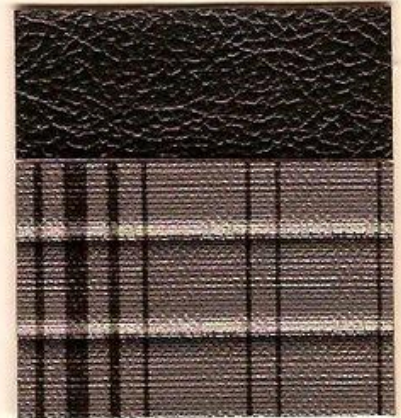
**CODE B2B5**

Exteriors: JA5, HB1, GB5, EW1, TX9 (TB3, HL4)



**CODE B2F6**

Exteriors: JF1, GF3, JF8, HL4, EW1, TX9 (HT6)



**CODE B2X9**

Exteriors: All Charger colors

Exterior paint codes shown are recommended for color coordination. Exterior paint codes shown in ( ) are also available.





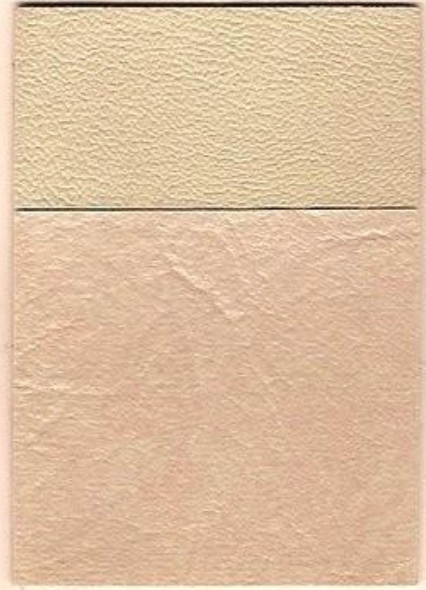
**CODE H6B5**

Exteriors: JA5, HB1, GB5, EW1, TX9  
(TB3, HL4)



**CODE H6F6**

Exteriors: JF1, GF3, JF8, HL4, EW1,  
TX9 (HT6)



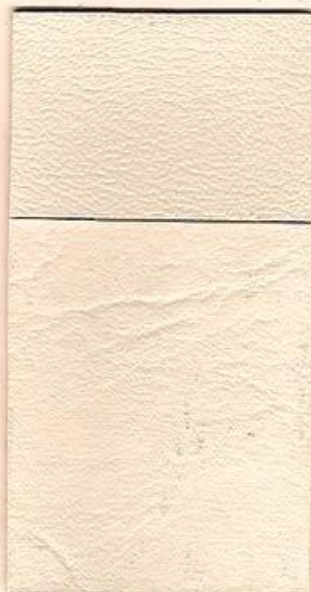
**CODE H6L3**

Exteriors: GB5, FE5, GF3, JF8, GK6,  
HL4, TX9, JY3, JY6, JY9  
(JA5, HB1, TB3, JF1,  
EW1, FY1)



**CODE H6X9**

Exteriors: All Charger colors



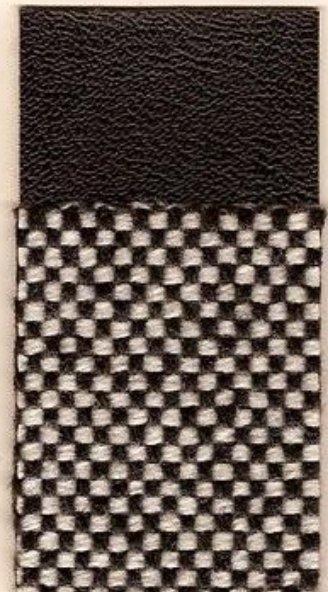
**CODE H6XW**

Exteriors: All Charger Colors



**CODE H6Y4**

Exteriors: HL4, EW1, TX9,  
JY3, JY6, JY9  
(JF8, GK6)



**CODE H5X9**

Exteriors: All Charger colors

Exterior paint codes shown are recommended for color coordination.  
Exterior paint codes shown in ( ) are also available.



# CHARGER

## ■ 2-DOOR HARDTOP



- Charger 2-door Hardtop optional at extra cost all-vinyl bucket seats. H6 codes



- Charger 2-door Hardtop optional at extra cost cloth and vinyl bucket seats. H5 code



# CHARGER VINYL SIDE MOLDING PAINT AND TAPE STRIPES

**VINYL SIDE MOLDING**—Optional and available in Black only (Code V5X). Available with all exterior colors.

**PAINT STRIPES—Body Side Upper**—Standard on Charger S.E. (Code V7). Available in three colors. (Delete Code V78).

**TAPE STRIPES—Body Side**—Standard with Rallye Package on Charger Coupe and 2-dr. H.T. in Black only (Code V6X). Available with all exterior colors. (Delete Code V68).

**TAPE STRIPES—Body Side—"Gradated" Design**—Optional with Rallye Package on Charger Coupe and 2-dr. H.T. in Red only (Code V6R). Available with JA5, FE5, EW1, TX9, FY1 exterior colors only.

**TAPE STRIPES—Deck Lid**—Optional on Charger Coupe and 2-dr. H.T. Available in Black only (Code V8X). Available with all exterior colors.

## Exterior Colors

Paint Stripe Colors	Code	JA5	HB1	TB3	GB5	FE5	JF1	GF3	JF8	GK6	HL4	HT6	EW1	TX9	FY1	JY3	JY6	JY9
Green	V7F							X	X		X		X	X				
White	V7W	X	X	X	X	X	X	X	X	X	X			X	X	X	X	X
Black	V7X	X	X	X	X	X	X	X	X	X	X	X	X		X	X	X	X

# CHARGER INTERIOR COLOR ACCENTS

Color	Trim Code	Material	Seat Insert	Bolster	Carpets	Instrument Panel and Shelf Panel	Steering Wheel	Headlining	Door Trim Panels
Blue	C2B5, H6B5, H4B5, E6B5	V	Med. Blue	Med. Blue	Med. Blue	Dk. Blue	Dk. Blue	Med. Blue	Med. Blue
	V3B5, S1B5	C & V							
Green	C2F6, H6F6, E6F6, H4F6	V	Med. Green	Med. Green	Med. Green	Med. Green	Med. Green	Med. Green	Med. Green
	V3F6, S1F6	C & V							
Parchment	C2L3, H6L3, H4L3, E6L3	V	Lt. Parchment	Lt. Parchment	Med. Parchment	Med. Parchment	Med. Parchment	Lt. Parchment	Lt. Parchment
Black	C2X9, N6X9, H4X9, E6X9, H6X9	V	Black	Black	Black	Black	Black	Black	Black
	V3X9, E5X9, H5X9, S1X9	C & V							
Gold	C2Y4, H6Y4, E6Y4, H4Y4	V	Lt. Gold	Lt. Gold	Dk. Gold	Med. Gold	Med. Gold	Med. Gold	Med. Gold
	V3Y4, S1Y4	C & V							
Blue	B2B5	V	Lt. Blue/Dk. Blue	Med. Blue	Blue/Black (1)	Dk. Blue	Dk. Blue	Med. Blue	Med. Blue
Green	B2F6	V	Lt. Green/Dk. Green	Med. Green/	Green/Black (1)	Med. Green	Med. Green	Med. Green	Med. Green
Black	B2X9	V	Gray/Black	Black	Black (1)	Black	Black	Black	Black
White	E6XW	V	White	White	Black	Black	Black	White	White

(1) Rubber Floor Covering Standard. Carpeting optional in A17 Deluxe Pkg.

C—Cloth V—Vinyl Lt.—Light Med.—Medium Dk.—Dark



SPECIFY: DDL For DURACRYL® acrylic lacquer • DAR For DELSTAR® acrylic enamel • DQE For DITZCO® alkyd enamel

Paint Code	Paint Code	Paint Code	Paint Code
 A5 2513 Dark Silver Poly	 F-1 2515 Pale Green	 L-4 2427 Parchment	 W-1 2033 Eggshell White
 B-1 2424 Light Blue	 F-3 2316 Light Green Poly	 L-6 2591 Aztec Gold Poly	 Y-1 2211 Top Banana
 B-3 2423 Blue Streak	 *F-5 2461 Bright Yellow Green Poly	 Q-5 2301 Turquoise Poly	 Y-2 81574 Yellow
 B-5 2306 Bright Blue Poly	 F8 2514 Dark Green Poly	 T-6 2426 Medium Tan Poly	 Y-3 2517 Light Gold
 B-9 2508 Dark Blue Poly	 K-6 2312 Bronze Poly	 T-8 2425 Dark Tan Poly	 Y-6 2509 Gold Poly
 E-5 2136 Bright Red	 X-9 9000, 9300 Black	*1972 COLOR ONLY	
		STATION WAGON AIR-DEFLECTOR BLACK 9395 GOLD 23802	
		LIGHT ARGENT (Lower Deck Panel and Tail Lamp Bezel) MEDIUM ARGENT 8933	
		TRUNK SPATTER FINISH 3-TONE DS-1734 (Black, White, Gray) 2-TONE DS-1768 (Black, White) BLUE ENGINE ENAMEL- DQE-14202	
		JY-9 2510 Dark Gold Poly	
		SINGLE TONE - X9-X9 TWO-TONE - X9-W1 FIRST TWO DIGITS ARE ACCENT OR ROOF COLOR. SECOND TWO DIGITS ARE BASIC BODY COLOR	
		PAINTED GRILLES ARE PAINTED IN EXTERIOR COLORS.	
		FOR SPECIAL COLORS (CODED 999) FURNISH SPECIAL ORDER (SO) NUMBER AND SELLING DEALER WITH SERIAL NUMBER OF CAR.	

**STRIPING COLORS**

White	2033
Black	9000
Light Brite Blue	14016
Medium Gold	23724
Parchment	23740
Light Bright Green	44647

**CORPORATE IDENTITY COLORS**

CORPORATE WHITE	8367
CORPORATE RED	71831

**1973 COLT**

 016 23654 Spice Poly	 021 82064 Bright Yellow	 025 81881 Sunburst Yellow	 064 60624 Sunset Orange
 017 44538 Sea Green Poly	 024 8866 Cherry Blossom White	 028 8938 Alpine Silver	 065 14273 Pacific Blue Poly

055 Bright Red 72020

(OVER)



# 1973-4 DODGE INTERIOR COLORS

## SEMI GLOSS FINISH

### CORONET - CHARGER

**USED ON:** Inner tailgate (integral) and sill. Curved tailgate access hole.

Color Name	Ditzler Code DIA
Dark Blue	14642
Light Parchment	23938
Dark Chestnut	23939
Dark Green Poly	44855

### DART

**USED ON:** (a) Upper and lower integral door garnish and upper inner frames. "B" and "A" pillars. Backlite mouldings.

Color Name	Ditzler Code DIA
Black	9406
Dark Blue	14642
Light Parchment	23938
Dark Green Poly	44855
Light Gold	82118

### POLARA - MONACO

**USED ON:** (a) Upper instrument panel. (b) Lower instrument panel, ash receiver face, glove box door. Steering column. Automatic gear selector quadrant and steering column collar. Wagon Parts - (c) Rear deck and seat panel assembly; floor with carpet, floor without carpet. Axle kick-up. Rear floor sill cover panels and filler mouldings. (d) Tailgate cover panels and frame.

Color Name	Ditzler Code DIA	Remarks
Ivory	8355	
Black	9404	
Black	9406	(a), (c), (d)
Dark Blue	14642	(c), (d)
Light Parchment	23938	(d)
Dark Chestnut	23939	(c), (d)
Dark Parchment	23998	(c)
Dark Gold	23999	(c)
Dark Green	44854	(c), (d)
Light Gold	82118	(d)

### SATIN OR FLAT COLORS CHALLENGER

**USED ON:** (a) Instrument Panel. Glove box door-inner and outer. Check arm. Ash receiver face and handle. Stereo speaker grilles. Rear window defogger bezel. (b) Steering column and housing assembly, steering column collapsible can. Steering column lock control with floor mounted transmission control. (c) Garnish Mouldings - Upper windshield header. Backlight. Roofrail. Forward edge "C" Pillar.

Color Name	Ditzler Code DIA	Remarks
White	8849	(c)
Black	9388	(a), (b), (c)
Dark Blue	14643	(a), (c)
Dark Green Poly	44856	(a), (c)

## CORONET - CHARGER

**USED ON:** (a) Instrument Panel - Defroster outlets, end cap, glove box door. Steering column and gear selector housing and spacer can and clip. Rear shelf defogger outlet bezel. Steering column lock control housing with floor mounted transmission. (b) Garnish Mouldings - Rear window, windshield upper inner, "C" Pillar, rear window side upper corners, roof rail. Lower "C" Pillar. Arm split back center front seat back hinge. (c) Roof rail quarter window moulding. "C" Pillar moulding and spare tire cover upper moulding. Headliner retainer roof rail and rear door. "D" Pillar speaker grill. Tailgate upper garnish mouldings - coachman. Quarter window belt moulding - coachman. (d) Floor pan assembly - panels, hinges, filler and mouldings.

Color Name	Ditzler Code DIA	Remarks
White	8849	(b)
Black	9388	(a), (b)
Dark Blue	14643	(a), (b), (c)
Dark Gold	23765	(a)
Dark Parchment	23795	(a), (d)
Light Parchment	23884	(b), (c)
Light Gold	23885	(b)
Dark Chestnut	23886	(a), (b), (c), (d)
Dark Green Poly	44856	(a), (b), (c), (d)

### DART

**USED ON:** (a) Steering column, (b) instrument panel, glove box door and check arm. Ash receiver face. Automatic gear selector quadrant and can assembly. Housing steering column lock control - floor shift only. Rear shelf defogger bezel. Folding back panel. (c) Roof rails, mouldings - Backlite upper.

Color Name	Ditzler Code DIA	Remarks
Black	9388	(a), (b), (c)
Dark Blue	14643	(b), (c)
Dark Gold	23765	(b)
Dark Parchment	23795	(b)
Light Parchment	23884	(c)
Light Gold	23885	(c)
Dark Green Poly	44856	(b), (c)

### POLARA - MONACO

**USED ON:** (a) Windshield garnish mouldings. Roof rails. Backlite moulding and cap. Rear window garnish mouldings - upper and lower. Wagon Parts - Tail gate roof header mouldings. Wheelhouse and tire cover mouldings. Radio speaker grill - rear quarter panel. Mouldings - Quarter window, roof rails, tailgate, roof header. Mouldings - 3rd seat back finish. Bezel - 3rd seat back latch release. Visor arms and brackets. (b) Rear shelf defogger bezel.

Color Name	Ditzler Code DIA	Remarks
Black	9388	(a), (b)
Dark Blue	14643	(a), (b)
Dark Gold	23765	(b)
Dark Parchment	23795	(b)
Light Parchment	23884	(a)
Light Gold	23885	(a)
Dark Chestnut	23886	(a)
Dark Green	44857	(a), (b)





# 1973 CHRYSLER CORPORATION COLORS

1973 CHRYSLER CORPORATION

<b>A5</b>  6700 Silver Metallic 4700	<b>B1</b>  6660 Light Blue 4660	<b>B3</b>  6661 Super Blue 4661	<b>B5</b>  6701 Brite Blue Metallic 4701
<b>B9</b>  6708 Dark Blue Met. 4708	<b>E5</b>  6421 Brite Red 4421	<b>E7</b>  6532 Burnished Red Met. 4532	<b>F1</b>  6702 Mist Green 4702
<b>F3</b>  6715 Light Green Metallic 4715	<b>F8</b>  6703 Dark Yellow Green Met. 4703	<b>K6</b>  6537 Bronze Metallic 4537	<b>L4</b>  6662 Beige 4662
<b>Q5</b>  6540 Turquoise Met. 4540	<b>T8</b>  6664 Dark Tan Met. 4664	<b>W1</b>  6293 White 4172	<b>Y1</b>  6430 Brite Yellow 4430
<b>Y2</b>  6225 Yellow 4130	<b>Y3</b>  6705 Light Gold 4705	<b>Y6</b>  6706 Gold Met. 4706	<b>Y9</b>  6707 Dark Gold Met. 4707
<b>T6</b>  6663 Medium Tan Metallic 4663	Refer to Package Label or Machine Mixing Formula For Pricing Code  *1972 Spring Color		<b>F5</b>  6698 Green Gold Met. 4698
			<b>J3</b>  6697 Meadow Green 4697

**Limbacher Paint and Color Works, Inc.**

MT. VERNON, NEW YORK 10550

CLEVELAND, OHIO 44127



# 1973 CHRYSLER CORPORATION CAR COLOR REFERENCE CHART

Code	Valiant Barracuda	Fury	Plymouth Satellite	Dart Challenger	Dodge Coronet	Polara	Chrysler	Imperial
A5	SILVER FROST MET.			DARK SILVER MET.			SILVER FROST MET.	
B1	BLUE SKY			LIGHT BLUE			BLUE SKY	
B3	BASIN ST. BLUE		BASIN ST. BLUE	SUPER BLUE				
B5	TRUE BLUE MET.			BRIGHTBLUE MET.			TRUE BLUE MET.	
B9		REGAL BLUE MET.				DARK BLUE MET.	REGAL BLUE MET.	
E5	RALLYE RED			BRIGHT RED				
E7							BURNISHED RED MET.	
F1	MIST GREEN			PALE GREEN			MIST GREEN	
F3	AMBER SHERWOOD MET.			LIGHT GREEN MET.			AMBER SHERWOOD MET.	
F8	FOREST GREEN MET.			DARK GREEN MET.			FOREST GREEN MET.	
K6	AUTUMN BRONZE MET.		AUTUMN BRONZE MET.	BRONZE MET.				
L4	SAHARA BEIGE			PARCHMENT			SAHARA BEIGE	
Q5		CORAL TURQUOISE MET.				TURQUOISE MET.	CORAL TURQUOISE MET.	
T6			MOJAVE TAN METALLIC		MEDIUM TAN METALLIC			
T8		CHESTNUT MET.				DARK TAN MET.	CHESTNUT MET.	
W1	SPINNAKER WHITE			EGGSHELL WHITE			SPINNAKER WHITE	
Y1	LEMON TWIST		LEMON TWIST	TOP BANANA				
Y2		SUN FIRE YELLOW				YELLOW	SUN FIRE YELLOW	
Y3	HONEY GOLD			LIGHT GOLD			HONEY GOLD	
Y6	GOLDEN HAZE MET.			GOLD METALLIC			GOLDEN HAZE MET.	
Y9	TAHITIAN GOLD MET.			DARK GOLD MET.			TAHITIAN GOLD MET.	





## ENGINE ENAMEL SPRAY PAINT

Mopar Performance's engine paint matches the factory original color so you can keep your engine compartment the original color. 16 ounces of quick drying enamel included in each can for painting engine block, parts or for fast touch up. See description below for proper application.

- P4120751** Race Hemi Orange - A bright orange color used on cars equipped with Max Wedge engines (413 and 426 Cross Ram) during 1962-64. Also used on 426 race Hemis built in 1964-65.
- P4349216** Street Hemi Orange - A red-orange color used on 426 Street Hemis built in 1966-71. Commonly referred to as "Hemi-Orange". During 1969-71, the high performance 383 and 440 engines and in 1970-71, the 340 engines were also painted this color.
- P4120753** Black-All 2.2 engines since 1981, and 318 and 360 engines since 1983 have been painted black from the factory.
- P4120752** Turquoise - This medium blue-green color was used on all B/RB big block engines during 1962-71 with the exception of the high performance 383/440 engines, which were painted Street Hemi Orange.
- P4349218** Red - This is the bright red color used on all 273 engines from 1964-69. Also, the 1968-69 340 engines and most mid-1960's 318 engines were finished in this color.
- P4349217** Blue - This medium blue color was used on all production engines from 1972-83 with exception of the 2.2 engine. Most 318 engines built from the late 1960's through 1972 were painted this color.
- P4529144** Yellow - Used on many early 1960's slant six engines including trucks.
- P4529148** Aluminum Silver - This color was used as far back as the 1940's and as late as the early 1960's. Most of the early Hemi's and 1950's engines were painted this color.
- P4529149** Gold Metallic - The "Golden Lion" engines of the late 1950's and early 1960's as well as the "Golden Commando" and DeSoto "Adventurer" engines used the color.

Mopar paint code for the 1972 and later blue engine paint is Dupont 5351D or PPG 2423